

CHILDHOOD TRAUMA

CYNTHIA BREWER, D.O.,

BILLINGS CLINIC FAMILY MEDICINE DEPARTMENT

MEDICAL DIRECTOR OF THE CHILD, ADOLESCENT AND ADULT RECOVERY CLINIC AND

MEDICAL DIRECTOR OF THE SANE PROGRAM



BACKGROUND

- A LITTLE ABOUT ME AND HOW I GOT HERE.
- CHILD, ADOLESCENT AND ADULT RECOVERY CLINIC (CARE PROGRAM)
- YELLOWSTONE VALLEY CHILDREN'S ADVOCACY CENTER
 - MULTI-DISCIPLINARY TEAM
- AMERICAN PROFESSIONAL SOCIETY ON THE ABUSE OF CHILDREN

CHILDHOOD TRAUMA

- WHAT IS CHILDHOOD TRAUMA?
- THIS CAN HAVE A LOT OF MEANINGS AND INTERPRETATIONS
- WHAT DOES IT MEAN TO BE TRAUMATIZED?
- APPROXIMATELY 754,000 CHILDREN IN THE US IN 2010 WERE VICTIMS OF CHILD MALTREATMENT
- AN ESTIMATED 1,560 CHILDREN DIE YEARLY FROM ABUSE OR NEGLECT

NEGLECT

- FAILURE TO MEET A CHILD'S BASIC NEEDS
- PHYSICAL
- EMOTIONAL
- MEDICAL
- EDUCATIONAL

PHYSICAL ABUSE

- THE USE OF PHYSICAL FORCE IN A NON-ACCIDENTAL MANNER TO CAUSE INJURY
- BRUISES, BURNS
- ABRASIONS
- SCARS
- FRACTURES
- ABUSIVE HEAD TRAUMA

SEXUAL ABUSE

- FORCING A CHILD TO ENGAGE IN SEX ACTS
- OFTEN HAS DELAYED DISCLOSURES

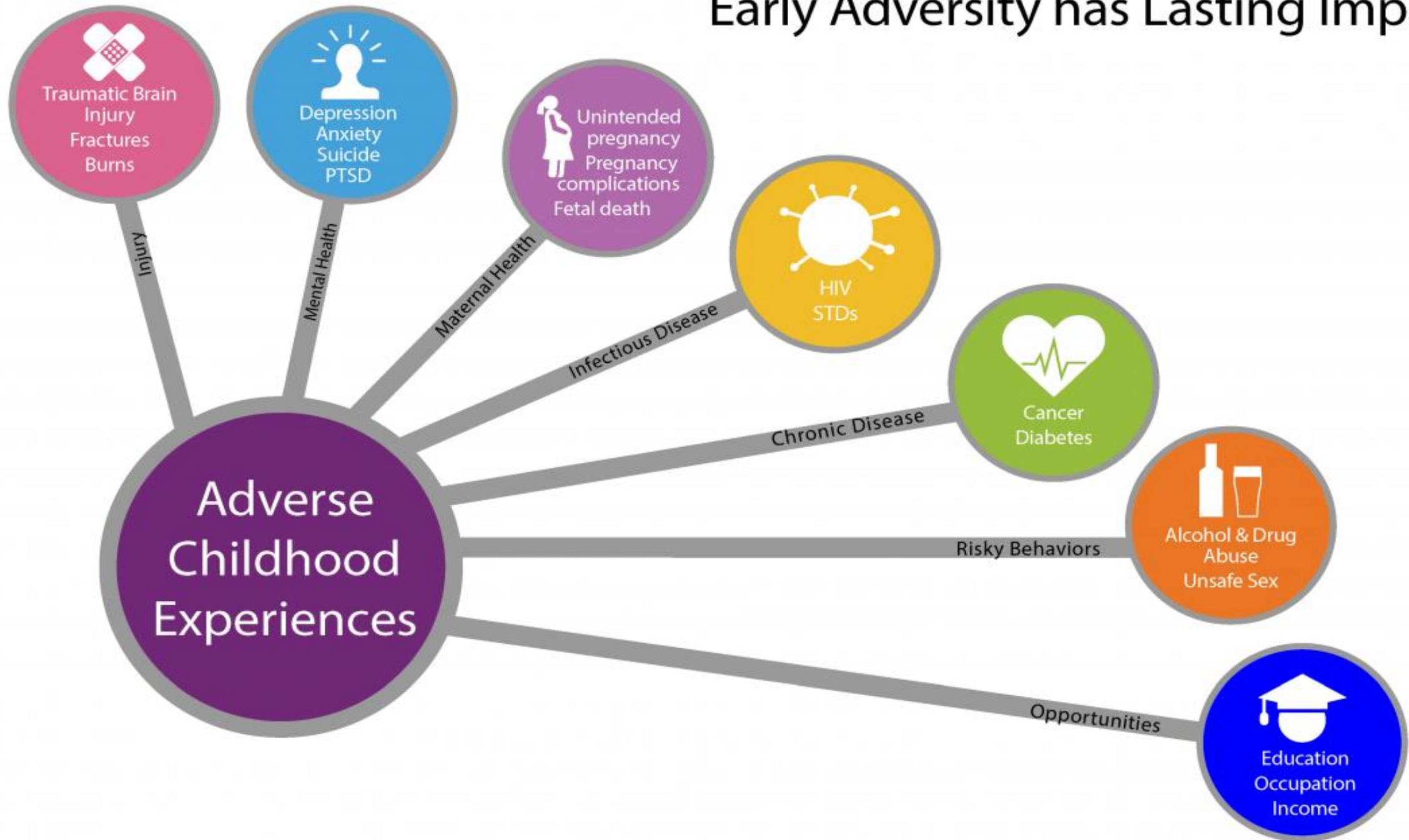
CHILD TORTURE

- EXTREME ABUSE THAT GOES BEYOND TYPICAL PHYSICAL ABUSE INJURIES
- INTENTIONAL INFLICTION OF PAIN AND SUFFERING
- WITH-HOLDING OF ESSENTIAL ITEMS INCLUDING SHELTER, WARMTH, CLOTHING
- DOMINANCE/SUBMISSION
- EMOTIONAL ABUSE AND CRUELTY

ACE STUDY

- KAISER STUDY, STARTED IN 1995 TO EVALUATE ADULT OBESITY
- PARTICULARLY TRAUMATIC EVENTS THAT OCCUR IN CHILDHOOD
 - EXPERIENCING VIOLENCE, ABUSE OR NEGLECT
 - WITNESSING VIOLENCE IN THE HOME
 - FAMILY MEMBER DEATH BY SUICIDE
- ENVIRONMENTAL EXPOSURES
 - SUBSTANCE ABUSE
 - MENTAL HEALTH
 - PARENTAL SEPARATION

Early Adversity has Lasting Impacts



WHAT IS OUR APPROACH?

- CPS
- LAW ENFORCEMENT
- MEDICAL
- MENTAL HEALTH
- VICTIM CENTERED, TEAM APPROACH

CPS AND LAW ENFORCEMENT

- EACH AGENCY WILL INVESTIGATE WITH A DIFFERENT FOCUS
 - CPS
 - LAW ENFORCEMENT
- THESE AGENCIES CROSS-REPORT BUT CAN CLOSE THEIR CASES INDEPENDENTLY

MEDICAL

- MEDICAL EXAMS DEPEND UPON EXTENT OF TRAUMA
- FOR PHYSICAL ABUSE, SOME PATIENTS MAY SEE THEIR PEDIATRICIAN. FOR MORE SEVERE CASE, REFERRALS ARE PLACED TO PROGRAMS SUCH AS THE CARE PROGRAM
- FOR SEXUAL ABUSE:
 - <120 HOURS: REFERRED IMMEDIATELY TO THE EMERGENCY DEPARTMENT
 - >120 HOURS: REFERRED TO CHILD ABUSE PROVIDER SUCH AS OUR CARE PROGRAM
- NEGLECT CASES ALSO DEPEND UPON THE EXTENT OF THE NEGLECT

MEDICAL EXAMS

- WE PREFER THAT A FORENSIC INTERVIEW HAS BEEN PERFORMED
- IF NO FORENSIC INTERVIEW, PROVIDER SHOULD BE TRAINED IN FORENSIC INTERVIEWING SO THAT THE MEDICAL INTERVIEW DOES NOT CONFLICT WITH LAW ENFORCEMENT OR CPS INVESTIGATIONS
- MEDICAL EXAMINATIONS ARE PERFORMED IN A VICTIM CENTERED ENVIRONMENT, QUIET, WELL-LIT
- PARENTS/GUARDIANS ARE INTERVIEWED FIRST, THEN CHILD
- EXAMINATIONS ARE PERFORMED WITH PARENT OR NURSE PRESENT
- IN THE ER WE HAVE VICTIM ADVOCATES

MENTAL HEALTH

- TRAUMA FOCUSED COUNSELING
- COGNITIVE BEHAVIORAL THERAPY
- EYE MOVEMENT DESENSITIZATION AND REPROCESSING
- ALL TRAINING IS NOT NECESSARILY THE SAME
 - CERTIFICATION VS CERTIFICATE
 - HOW TO DETERMINE THE BEST THERAPISTS FOR THESE VICTIMS IN OUR COMMUNITY

GROUP DISCUSSION

- WHAT COMMUNITY SUPPORT IS THERE FOR THESE CHILD VICTIMS?
- WHAT SUPPORT/TRAINING CAN WE PROVIDE FOR PARENTS?
- HOW DO WE HELP THESE CHILDREN WITH RESILIENCY?

CASE 1:

- 5 CHILDREN WERE EVALUATED AFTER DISCLOSURE OF CHILD SEXUAL ABUSE FROM THE ELDEST DAUGHTER
- THE FAMILY HAD BEEN LIVING OFF-GRID
- THE PARENTS BELIEVED THAT THEY WERE “WICCAN” AND THEY PRACTICED THEIR OWN FANTASY RELIGION THAT MADE THEIR CHILDREN SUBMISSIVE TO THEM.
- THE FATHER SEXUALLY ABUSED ALL 3 DAUGHTERS. HE TOLD THEM THAT IN ORDER FOR HIM TO HAVE MORE “POWER”, HE HAD TO HAVE SEX WITH HIS CHILDREN

CASE 1:

- IN ADDITION TO MULTIPLE REPEATED COUNTS OF CHILD SEXUAL ABUSE, THE CHILDREN WERE FOUND TO BE SEVERELY NEGLECTED AND ABUSED IN OTHER WAYS
- NONE OF THE CHILDREN COULD READ OR WRITE (AGES 7-14)
- POOR DENTAL CARE WITH MULTIPLE CAVITIES
- SPEECH AND LANGUAGE DELAYS
- STRANGULATION
- SLEEPING ON THE FLOOR, FLEAS
- MEDICATED WHEN ACTING OUT OR BEFORE BEDTIME
- FOOD DEPRIVATION, CHILDREN WERE EATING CONDIMENTS FOR MEALS

CASE 1:

- ALL CHILDREN HAD FORENSIC INTERVIEWS
- SECOND OLDEST WAS HOSPITALIZED BRIEFLY ON OUR INPATIENT PSYCHIATRIC UNIT
- ALL CHILDREN HAD MEDICAL EXAMS, NEUROPSYCHIATRIC EVALUATIONS
- SPEECH ASSESSMENTS AND EDUCATIONAL ASSESSMENTS WERE PERFORMED
- INTENSE COUNSELING

CASE 1:

- FATHER PLED GUILTY TO 3 CHARGES OF SEXUAL ABUSE OF MINOR
- SENTENCED TO 100 YEARS IN PRISON
- MOTHER'S PARENTAL RIGHTS WERE TAKEN
- ALL CHILDREN HAVE BEEN ADOPTED INTO DIFFERENT FOSTER HOMES
- THEY INITIALLY STRUGGLED IN SCHOOL, ADAPTING AND TRANSITIONING
- SEVERAL HAVE CHANGED THEIR NAMES

MISSED OPPORTUNITIES FOR INTERVENTIONS

- WELL CHILD APPOINTMENTS
- CHILDREN WERE SEEING A COUNSELOR DURING ABUSE
- SCHOOL VS HOME SCHOOL
- COMMUNITY/NEIGHBORS

REFERENCES

- THE EVALUATION OF SUSPECTED CHILD PHYSICAL ABUSE. PEDIATRICS APRIL 2015
- CHILD MALTREATMENT: SCREENING AND ANTICIPATORY GUIDANCE. JOURNAL OF PEDIATRIC HEALTH 2013
- THE APSAC HANDBOOK ON CHILD MALTREATMENT, 4TH EDITION. KLIKA AND CONTE 2018